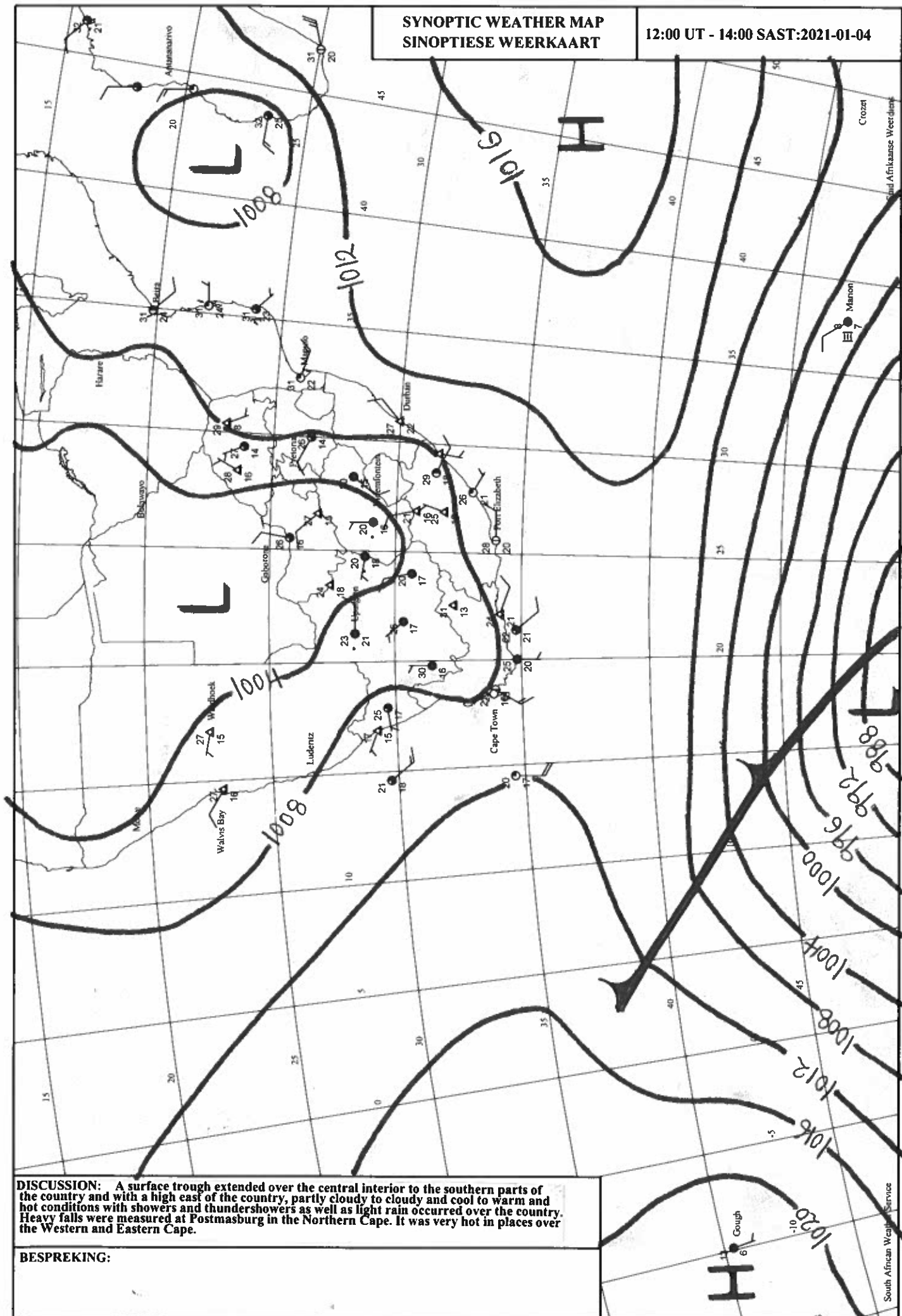


**SYNOPTIC WEATHER MAP
SINOPTIESE WEERKAART**

12:00 UT - 14:00 SAST:2021-01-04



DISCUSSION: A surface trough extended over the central interior to the southern parts of the country and with a high east of the country, partly cloudy to cloudy and cool to warm and hot conditions with showers and thundershowers as well as light rain occurred over the country. Heavy falls were measured at Postmasburg in the Northern Cape. It was very hot in places over the Western and Eastern Cape.

BESPREKING: