

Thursday, 24 June 2021

## Very rough seas and gale force winds expected for the Cape Provinces

25 to 26 June 2021

A cold front will make landfall over the south-western Cape on Friday afternoon, 25 June 2021, resulting in strong to gale force winds and very rough sea conditions, especially along the coastal areas of the Western Cape, spreading along the Eastern Cape south coast on Saturday morning, 26 June 2021.

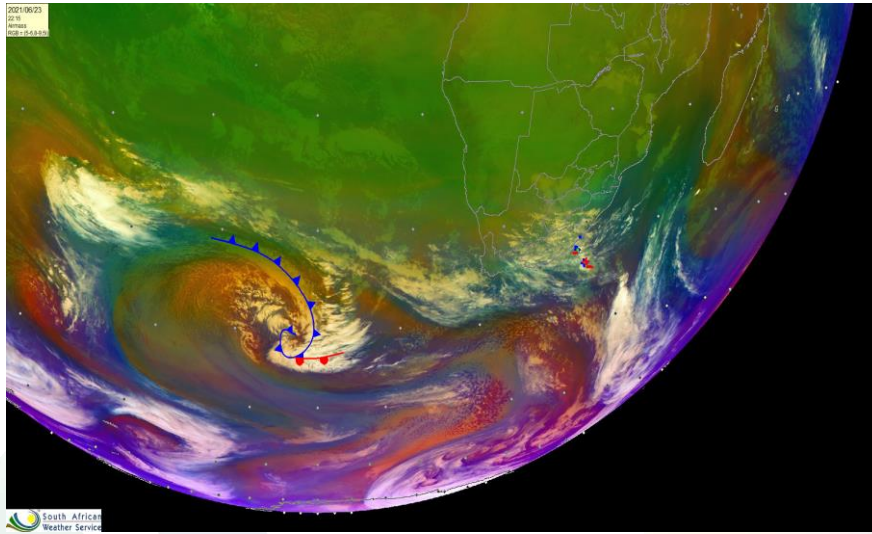
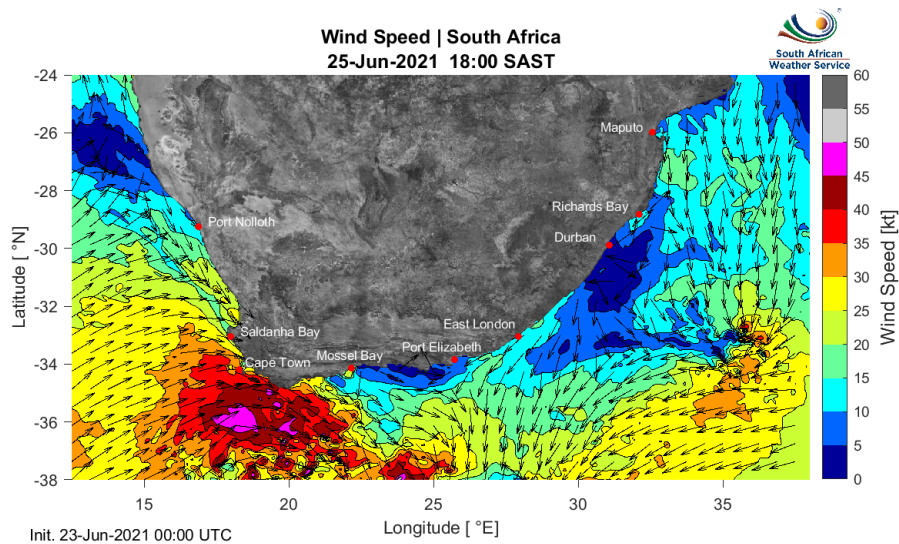


Figure 1: Satellite image of the expected cold front observed over the south-western Atlantic Ocean. Source: ©Eumetsat 2021

A cold front is set to move in over the south-western Cape during Friday (25 June 2021) afternoon causing scattered showers and rain, especially over the western parts of the Western Cape, spreading along the south coast in the evening. Whilst rainfall is not expected to be a significant factor with this system, sustained strong to gale force north-westerly to westerly winds of 55-70 km/h will impact the south-west coast from the morning, spreading along the south coast of the Western Cape in the evening. These winds will further be accompanied by very rough sea conditions (5.0 to 6.0m wave heights). These conditions, coupled with a full moon, are likely to result in dangerous conditions for vessels at sea. This may result in the risk of medium or large vessels dragging anchors or breaking mooring lines. Localised disruptions to beach front activities and damage to coastal infrastructure may also occur.

**Certified for  
Excellence**

**Board Members:** Ms Nana Magomola (Chairperson), Dr Phillip Dexter (Deputy Chairperson), Adv Derick Block, Mr David Lefutso, Dr Mphekgo Maila, Ms Kelebogile Moroka-Mosia, Ms Sally Mudly-Padayachie, Dr Thuli Khumalo (DFFE Rep), Mr Itani Phaduli, Ms Feziwe Renqe. Mr Ishaam Abader (CEO).  
**Company Secretary:** Ms Thandi Zide



**Figure 2: Predicted winds (in knots) for Friday (25 June 2021). Source: SAWS**

Strong winds (40-60 km/h) will also be present over the western interior of the country, especially over the Western and Northern Cape, and could result in localised infrastructure damage as well as a high risk for the development and spread of veld fires.

**The South African Weather Service has issued the following Warnings:**

1. Yellow level 2 warning for wind leading to possible localised infrastructure damage is expected over the Central Karoo, City of Cape Town, Overberg and eastern parts of Cape Winelands of the Western Cape and the southern parts of Namakwa (Northern Cape) on Friday.
2. Yellow level 2 warning for waves leading to possible coastal infrastructure damage and difficulty in navigation at sea is expected between Lambert's Bay and Cape Agulhas from Friday afternoon, spreading to Plettenberg Bay in the evening.

The South African Weather Service will continue to monitor any further developments relating to this weather system and will issue subsequent updates as required. Furthermore, the public are urged and encouraged to regularly follow weather forecasts on television and radio. Updated information in this regard will regularly be available at [www.weathersa.co.za](http://www.weathersa.co.za) as well as via the SA Weather Service Twitter account @SAWeatherServic

Compiled by Wayne Venter; Edited by Jacqueline Modika and Kevin Rae.

**For technical and weather enquiries:**

National Forecasting Centre: Tel: 012 367 6041

**Media enquiries:** Ms Hannelee Doubell: Manager, Communications; Tel: (012) 367 6104; Cell: 072 222 6305; E-mail: [hannelee.doubell@weathersa.co.za](mailto:hannelee.doubell@weathersa.co.za)

USSD: Dial \*120\*7297#; Weather-ready, Climate-smart

Download our WeatherSMART APP free from the App store:

For Apple Smartphones: <https://apps.apple.com/za/app/weathersmart/id1045032640>

For Android Smartphones: <https://play.google.com/store/apps/details?id=za.co.afrigis.saws.droid.activity&gl=ZA>