

Sunday, 12 July 2020

Intense cold front expected in the Cape Provinces on Monday, 13 July 2020

Capetonians can expect chilly, windy and wet conditions to resume from Monday, 13 July 2020, since yet another cold front will make landfall on the south-western areas of the country. With gale to strong gale force winds blowing at 65 to 100 km/h, the highest impact will include communities around Table Bay, False Bay, Hermanus, Cape Agulhas and adjacent interior areas. Marine impacts will also include high to very high sea conditions, with heights ranging from 6 to 13 m along the Northern and Western Cape coastal line, spreading to the Eastern Cape during the course of Monday.

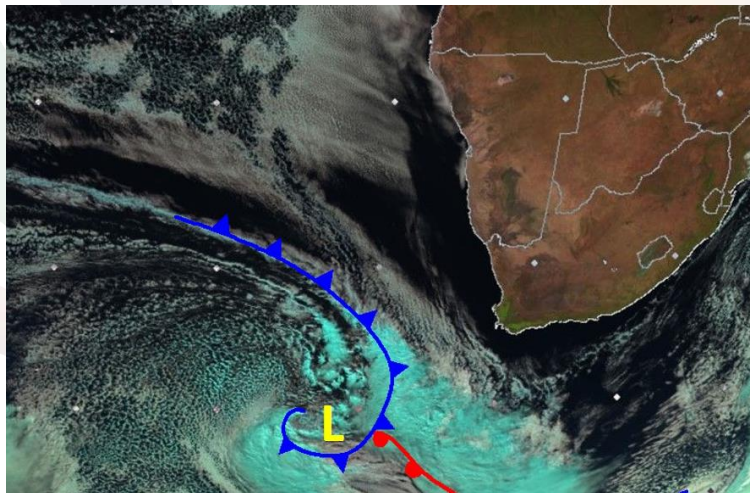


Figure 1: Satellite image indicating the approaching cold front (courtesy: Eumetsat).

**Certified for
Excellence**

Board Members: Ms Nana Magomola (Chairperson), Dr Phillip Dexter (Deputy Chairperson), Adv Derick Block, Mr David Lefutso, Dr Mphokgo Maila, Ms Kelebogile Moroka-Mosia, Ms Sally Mudly-Padayachie, Dr Tsakani Ngomane (DEA Rep), Mr Itani Phaduli, Ms Feziwe Renqe. Mr Mnikeli Ndabambi (acting CEO).
Company Secretary: Ms Thandi Zide

A cold front, expected to make landfall over the south-western parts of the Western Cape early on Monday morning, will result in gale to strong gale force (65 – 100km/h) north-westerly to westerly winds over the Western, Northern and Eastern Cape Provinces as well as along the coast between Cape Columbine and George, spreading to Port Alfred in the evening. High seas, with wave heights of 6 to 9 m are expected between Lamberts Bay and Port Alfred, with very high seas of wave heights between 9 to 13 m expected between Slangkop and Port Alfred. The coast between Cape Columbine and Plettenberg Bay (Western Cape) can also expect storm surge, which may lead to further coastal infrastructure damage and beach erosion.

The impacts associated with these adverse weather conditions are as follows:

Gale to strong gale force winds may result in damage to coastal infrastructure, beach erosion and difficulties for boaters and fishers. Disruption of harbours and ports as well as beachfronts can be expected. Medium to large vessels will be at risk as a result of dragging of anchors.

Gale to strong gale force winds over the interior could lead to damage of formal and informal settlements. Falling over of trees is likely to affect properties and road travel. Increased travel time is likely and high sided vehicles are at risk of falling over as a result of crosswinds particularly on the N1, N2, N7 and R60. Strong north-westerly winds over the interior may fuel runaway fires over the Eastern Cape.

Due to saturated ground from the past few days' rainfall, further rainfall is likely to lead to flooding of roads and informal settlements, which may lead to damage of property and displacement of vulnerable communities, especially in the Cape Winelands, Cape Metropole and western Overberg. There is also a risk to life due to fast moving streams, damaged roads and low bridges. Disruption of traffic is likely, as well as increased motor vehicle accidents. Vulnerable areas are likely to experience disruption to essential services.

Alerts issued by the South African Weather service can be seen in figure 2 below.

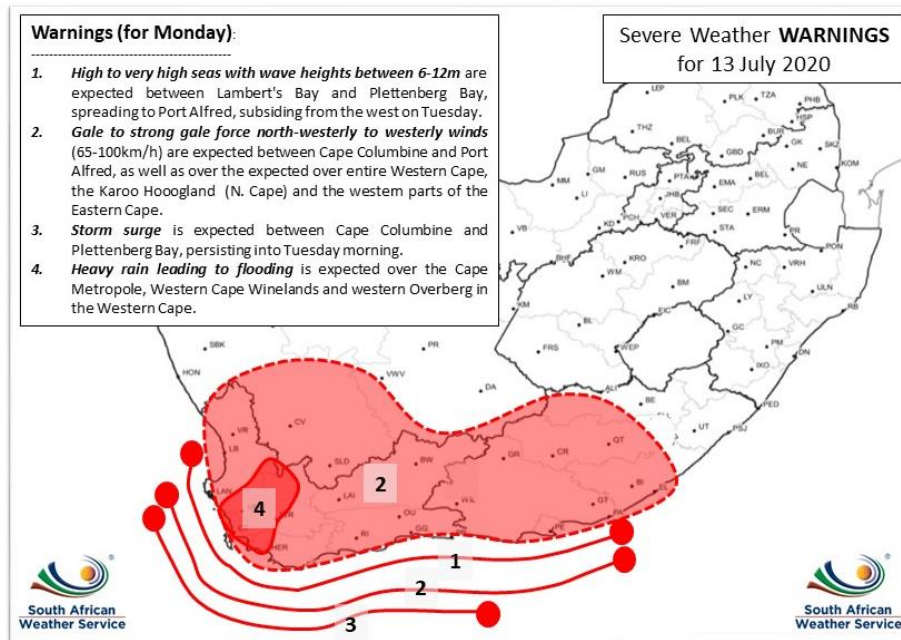


Figure 2: Alerts valid for Monday, 13 July 2020.

Cold to very cold conditions are expected over parts of the Western Cape and Northern Cape on Monday, spreading to the remainder of the country on Tuesday and Wednesday. Minimum temperatures are expected to plummet significantly, with widespread frost predicted for Wednesday morning, 15 July 2020, across the central interior of the country: northern areas of the Eastern Cape, eastern areas of the Northern Cape, extreme southern areas of the North West and Gauteng as well as the Free State.

The South African Weather Service (SAWS) will continue to monitor any further developments relating to this weather system and will issue subsequent updates as required timely. Furthermore, the public are urged and encouraged to regularly follow the weather forecasts on television and radio issued by SAWS. Updated information in this regard will regularly be available at www.weathersa.co.za as well as via the SA Weather Service Twitter account @SAWeatherServic and on the Weather Smart App.

Compiled by: Wayne Venter, Mbavhi Maliage, Stella Nake and Nonpumelelo Kleinbooi

Edited by: Puseletso Mofokeng

For technical and weather enquiries:

National Forecasting Centre: Tel: 012 367 6041

Media enquiries: Ms Hannelee Doubell: Manager, Communications; Tel: (012) 367 6104; Cell: 072 222 6305; E-mail: hannelee.doubell@weathersa.co.za

USSD: Dial *120*7297#; Weather-ready, Climate-smart

Download our WeatherSMART APP free from the App store:

For Apple Smartphones: <https://apps.apple.com/za/app/weathersmart/id1045032640>

For Android Smartphones: <https://play.google.com/store/apps/details?id=za.co.afrigis.saws.droid.activity&gl=ZA>