

26 January 2022

Update on Tropical Storm Ana

Tropical low pressure Ana developed on 20 January 2022 in the far eastern parts of the South-West Indian Ocean Basin. While moving westwards (Figure 1), this tropical low pressure intensified before making landfall over Madagascar on the 22 January. By 23 January, the low pressure entered the warm Mozambique Channel and once again intensified, reaching moderate tropical low pressure intensity. It was at this stage that the low pressure was assigned the name “Ana”. Ana made landfall in Angoche, Mozambique on 24 January and continued on a westward track, through the extreme southern parts of Malawi towards Tete, Mozambique.

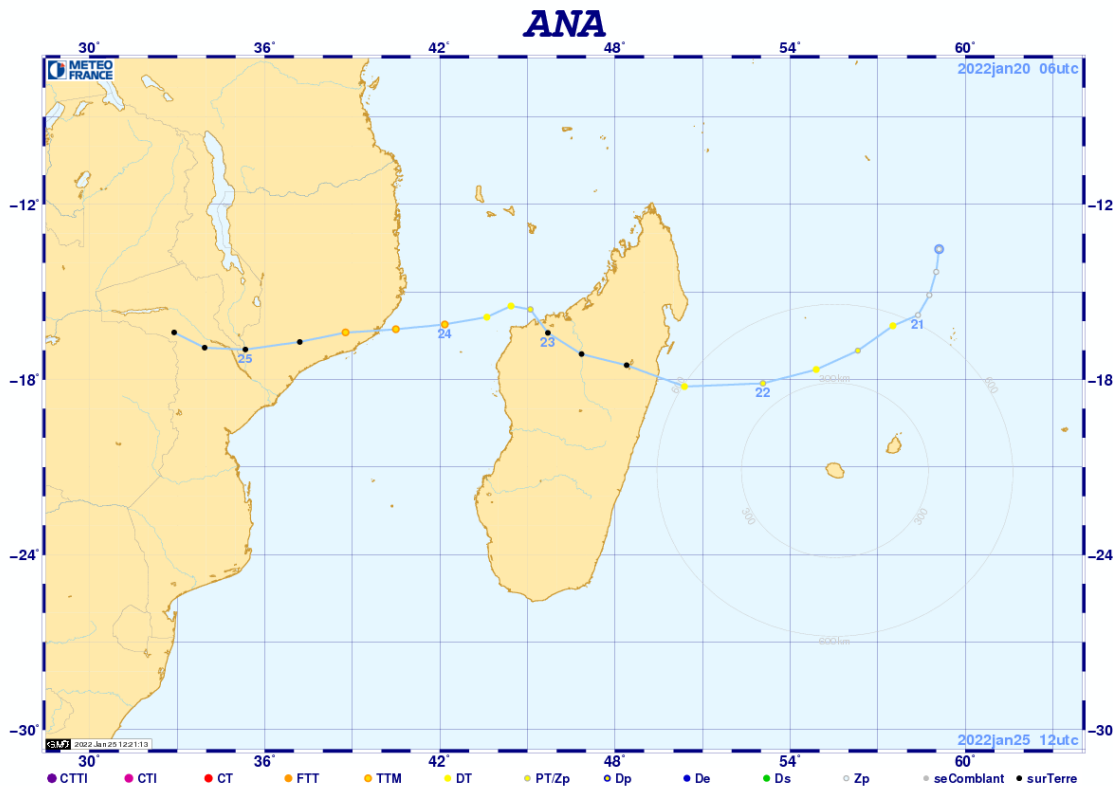


Figure 1: Track of tropical storm Ana

**Certified for
Excellence**

Board Members: Ms Feziwe Renqe (Chairperson), Vacant (Deputy Chairperson), Ms Sandika Daya, Ms Mmapula Kgari, Ms Nana Magomola, Prof Sylvester Mpandeli, Mr Itani Phaduli, Mr Grant Son, Dr Mmaphaka Tau, Mr Peter Lukey (DFFE Rep), Mr Ishaam Abader (CEO).

Company Secretary: Ms Milicent Fatlane (Interim Company Secretary)

While Ana has weakened significantly due to friction from the landmass as well as the loss of moisture, heavy rain has already caused havoc over central Mozambique and southern Malawi. Ex-Ana is currently situated over northern Zimbabwe and is expected to move into southern Zambia tomorrow. As a result of this track, Malawi should see some relief from the rain, however, heavy showers will persist in central Mozambique and reach Zimbabwe today (Figure 2). By tomorrow, these showers will continue over central Mozambique (Figure 3) and in places over Zambia and Zimbabwe.

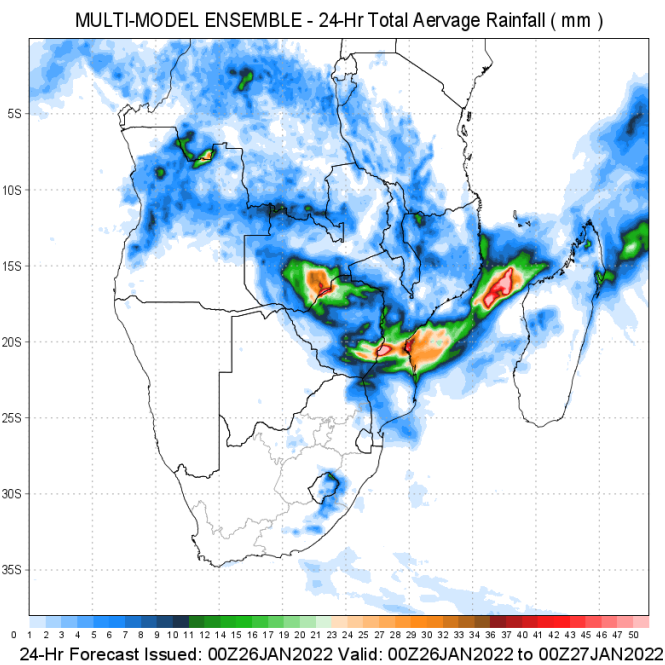


Figure 2: Total accumulated rainfall for 26 January 2022

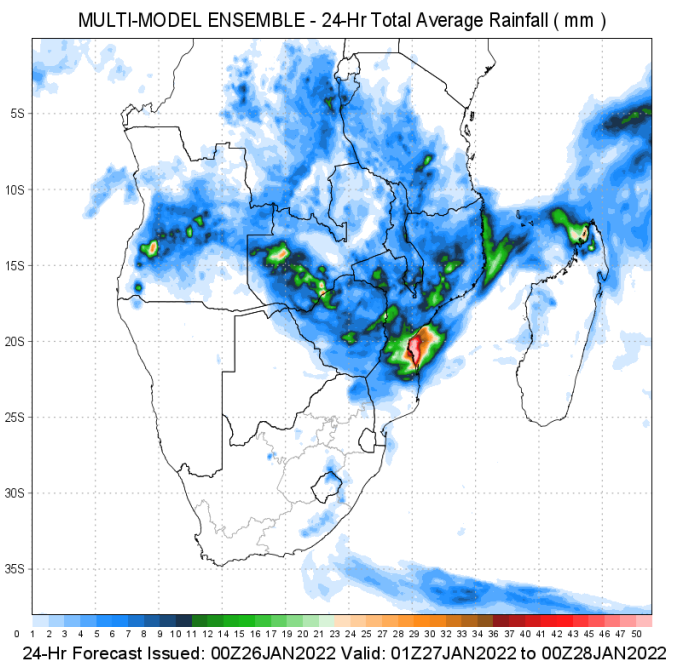


Figure 3: Total accumulated rainfall for 27 January 2022

Even though Ana weakens, it is expected that Malawi and Zambia could once again experience heavy showers towards the end of the week and into the weekend. This situation will be exasperated by the saturated ground currently being experienced.

On a local front, it has been relatively quiet in South Africa, due to the secondary impacts of a tropical low pressure in the Mozambique Channel. This is as a result of moisture being concentrated towards the low pressure, causing dry conditions over the country. However, the extreme outer bands of this low pressure is currently causing showers in Limpopo, but this rain is not expected to have a negative impact at this stage.

For the remainder of the country, a weak upper trough will result in thundershowers in the eastern parts by the end of the week. No warnings have been issued at this stage, and the South African Weather Service will continue to monitor the situation closely.

Compiled by: Elizabeth Viljoen

Edited by: Ezekiel Sebego

For technical and weather enquiries:

National Forecasting Centre: Tel: 012 367 6041

Media enquiries: Ms Hannelee Doubell: Manager, Communications; Tel: (012) 367 6104; Cell: 072 222 6305; E-mail: hannelee.doubell@weathersa.co.za

USSD: Dial *120*7297#; Weather-ready, Climate-smart

Download our WeatherSMART APP free from the App store:

For Apple Smartphones: <https://apps.apple.com/za/app/weathersmart/id1045032640>

For Android Smartphones: <https://play.google.com/store/apps/details?id=za.co.afrigis.saws.droid.activity&gl=ZA>